

**FOR LEASE**  
**75,000 SF**

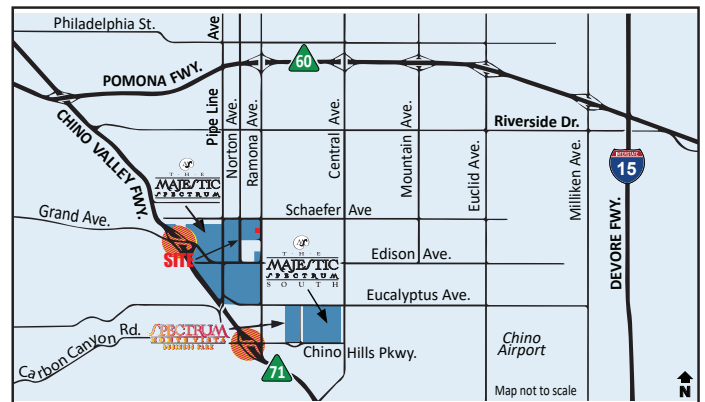


**Building 4: 13740-13760 Ramona Avenue, Chino, CA**

**FEATURES**

- Main Office:** 4,272 SF
- Clearance:** 26' Minimum
- Sprinklers:** .60 GPM/3,000 SF
- Power:** 2,500 Amp, 277/480 Volts, 3 Phase
- Loading:** 9 DH Positions  
-7 w/ Edge-of-Dock Levelers  
-1 w/ Pit Leveler  
2 GL Ramps
- Parking:** To Code
- Lighting:** 4-Lamp, T-5 Fluorescent Fixtures w/Motion Sensors

Part of a 5 Million SF Master Planned Business Park  
Adjacent to Chino Valley (71) Fwy With Access to O.C. via  
Riverside (91) Fwy & L.A./Ontario via Pomona (60) Fwy



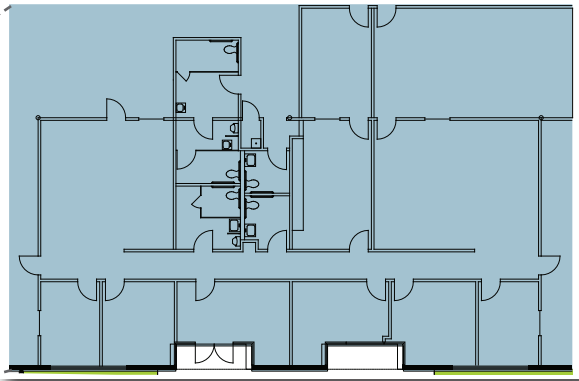
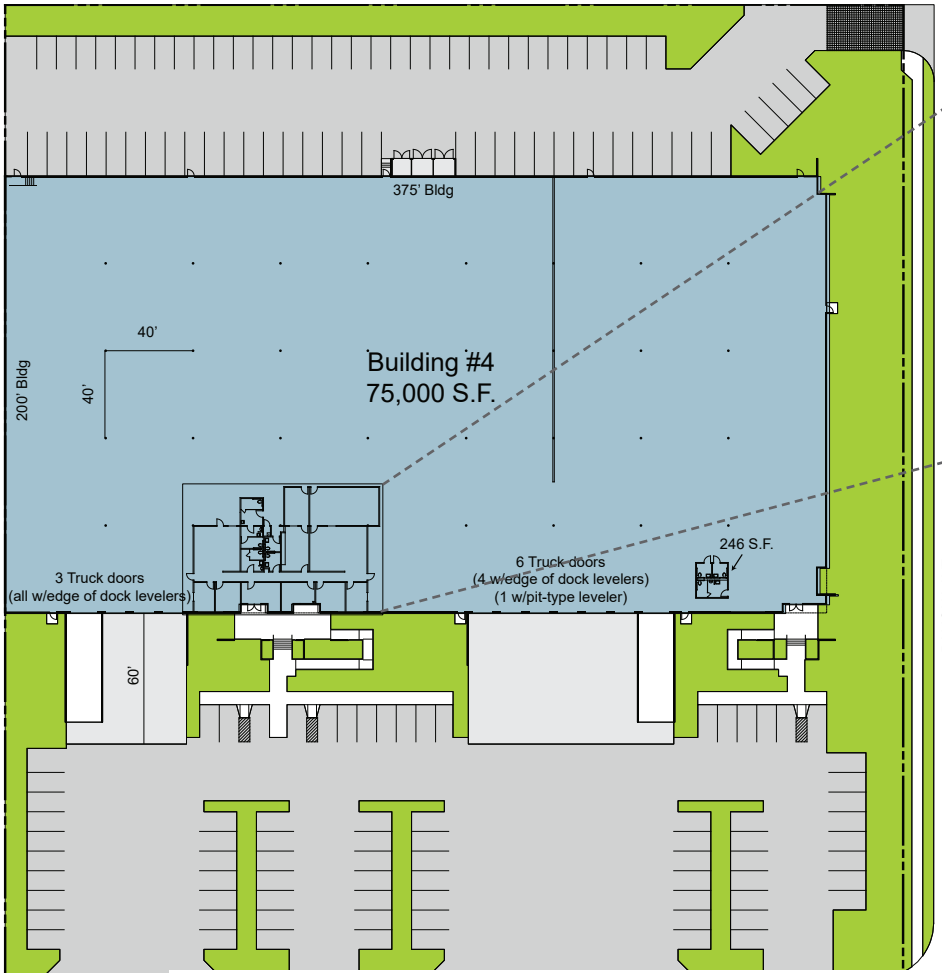
13191 Crossroads Parkway North, 6th Floor, City of Industry, CA 91746  
(562) 692-9581 | www.majesticrealty.com | R.E. License #00255328 (CA)

**Mitch Embrey**  
(562) 654-2726  
membrey@majesticrealty.com  
R.E. License #02058837 (CA)

**Trent Wylde**  
(562) 948-4315  
twylde@majesticrealty.com  
R.E. License #01180856 (CA)

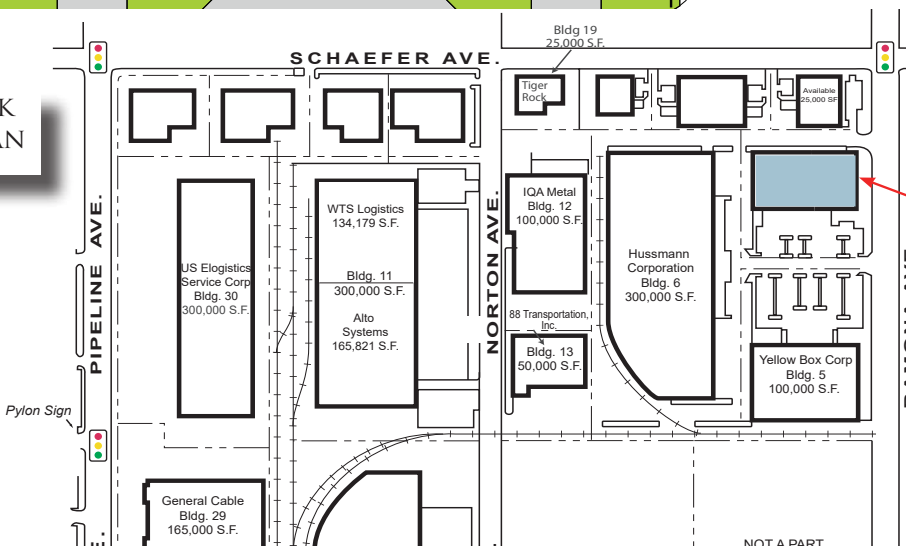
# Building 4 / Site Plan

75,000 Square Feet



OFFICE LAYOUT  
4,272 SF

## INDUSTRIAL PARK MASTER SITE PLAN



AVAILABLE  
Bldg #4  
75,000 S.F.

**Mitch Embrey**  
(562) 654-2726  
membrey@majesticrealty.com  
R.E. License #02058837 (CA)

**Trent Wylde**  
(562) 948-4315  
twylde@majesticrealty.com  
R.E. License #01180856 (CA)



This statement is based upon information which we believe to be correct and is obtained from sources we regard as reliable but we assume no liability for errors or omissions therein.