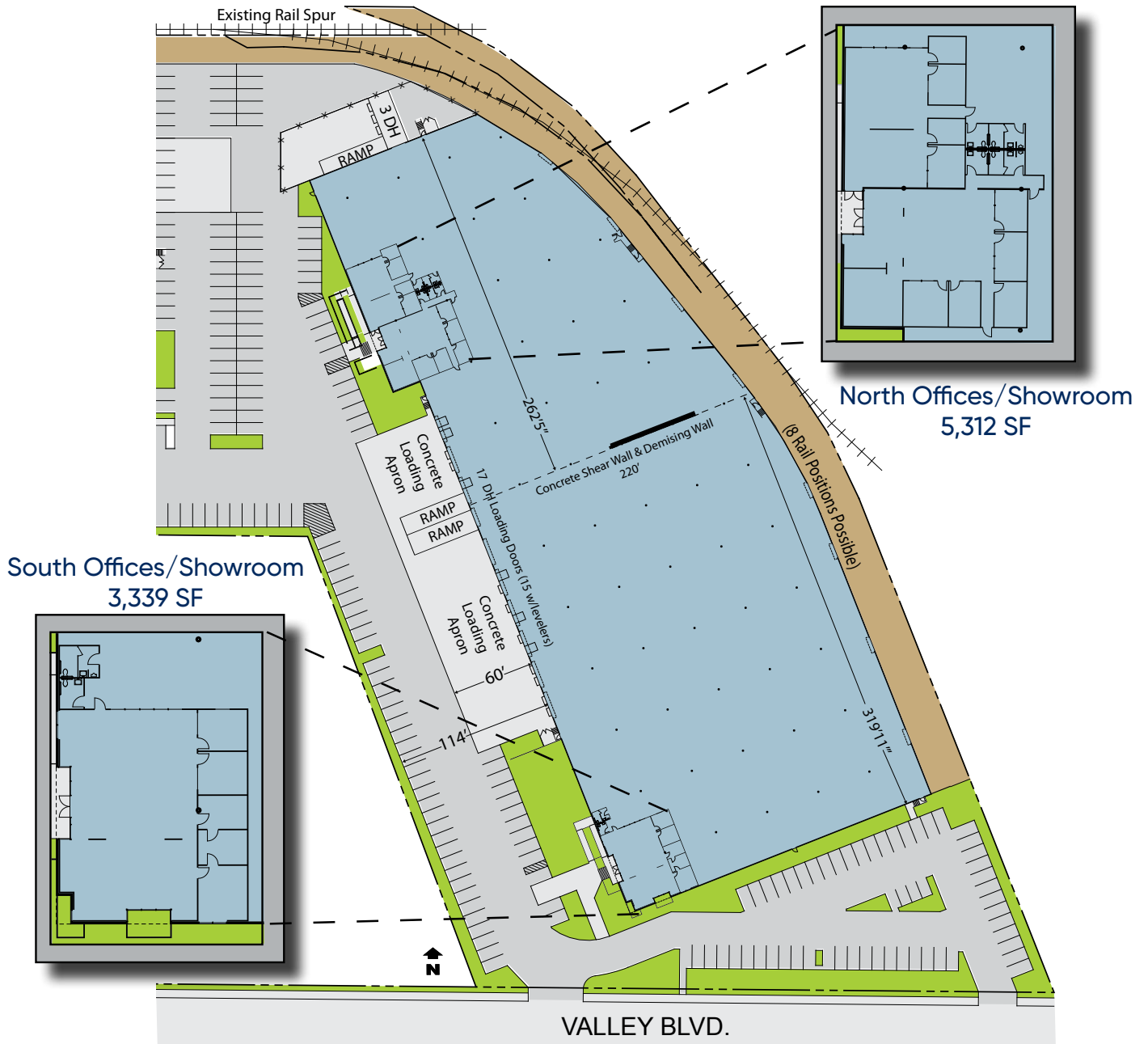


AVAILABLE FOR LEASE

VALLEY & RUSSELL BUSINESS PARK

125,000 SQUARE FEET - DIVISIBLE TO 50,000 SF

15801 E. Valley Blvd., City of Industry, CA (Adjacent to the N.E. Corner of Russell and Valley Blvd.)



For additional information:



John Semcken - (562) 948-4306
R.E. License #00979758 (CA)
jsemcken@majesticreality.com

Bill Hayden - (562) 948-4352
R.E. License #01257411 (CA)
whayden@majesticreality.com

Taylor Talt - (562) 654-2734
R.E. License #01901707 (CA)
ttalt@majesticreality.com

This statement is based upon information which we believe to be correct and is obtained from sources we regard as reliable but we assume no liability for errors or omissions therein.