

# MAJESTIC FREEWAY BUSINESS CENTER RIVERSIDE COUNTY, CA

INDUSTRIAL WAREHOUSE SPACE AVAILABLE FOR SALE OR LEASE



## BUILD-TO-SUIT

- Bldg 21: 106,552 SF
- Bldg 22: 108,872 SF
- Offices to Suit
- ESFR Fire Sprinkler System
- Warehouse Lighting to Suit
- Ample Auto & Trailer Parking
- Immediate Access to I-215 via Cajalco Road & Harley Knox Boulevard



For more information, contact:

Taylor Talt  
D-(562) 654-2734 C-(626) 660-8829  
R.E. License #01901707 (CA)  
Ttalt@MajesticRealty.com

John Semcken  
D-(562) 948-4306 C-(562)-556-1887  
R.E. License #00979758 (CA)  
JSemcken@MajesticRealty.com

Ed Konjoyan  
D-(562) 948-4318  
R.E. License #01403186 (CA)  
EKonjoyan@MajesticRealty.com



# MAJESTIC FREEWAY BUSINESS CENTER

## RIVERSIDE COUNTY, CA

**BUILDING 21: 106,522 SF**  
22650 Oleander Avenue, Perris, CA

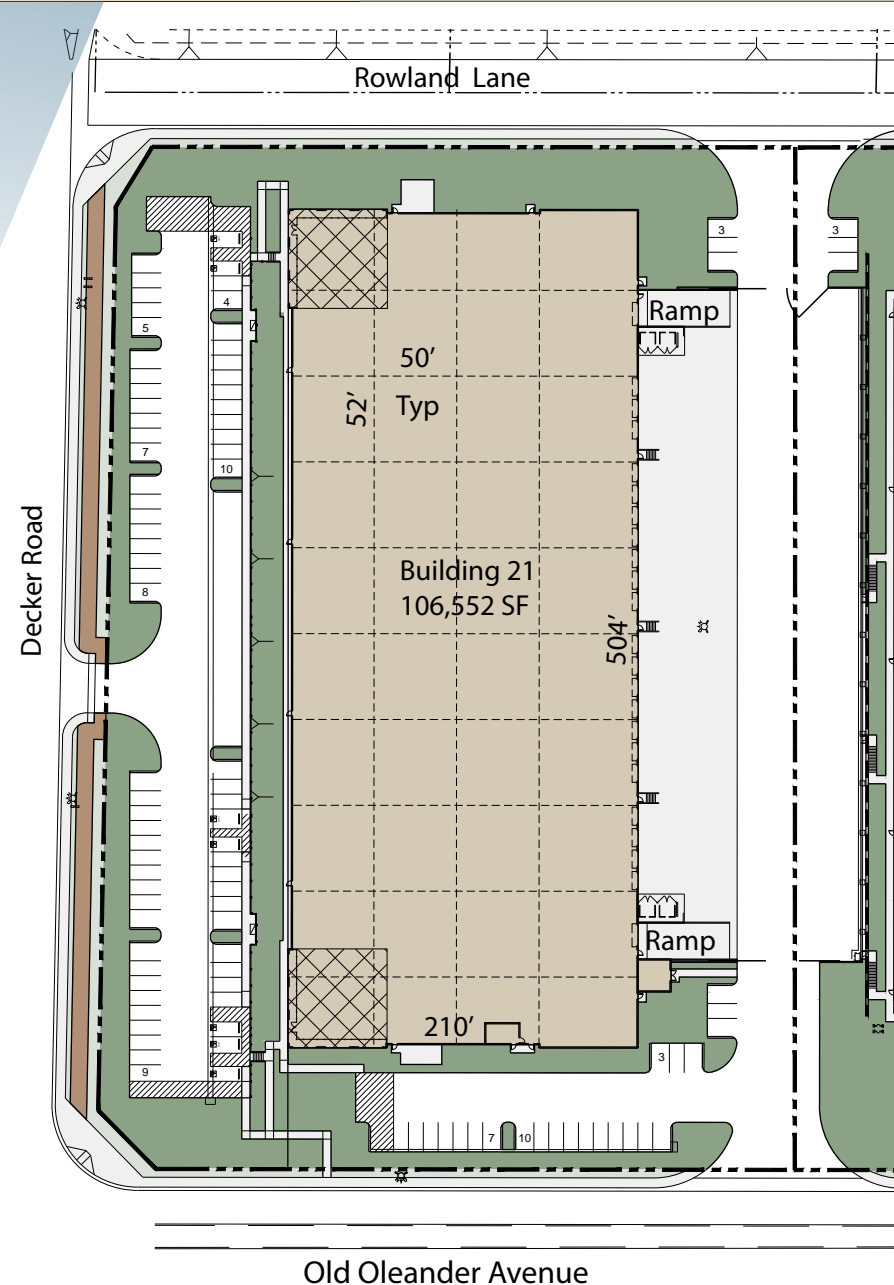
32'  
Clear  
Height

21  
Dock High  
Doors

99  
Auto  
Parking  
Stalls

### BUILDING 21 SPECS

Total Size	106,552 SF
Loading	Single Loading
Column Spacing	50' x 52' Typical Bay
Speed Bay:	60'
Ramps	2 Grade Level Ramps
Building Depth	210'
Sprinklers	ESFR



# MAJESTIC FREEWAY BUSINESS CENTER

## RIVERSIDE COUNTY, CA

**BUILDING 22: 108,872 SF**  
22530 Oleander Avenue, Perris, CA

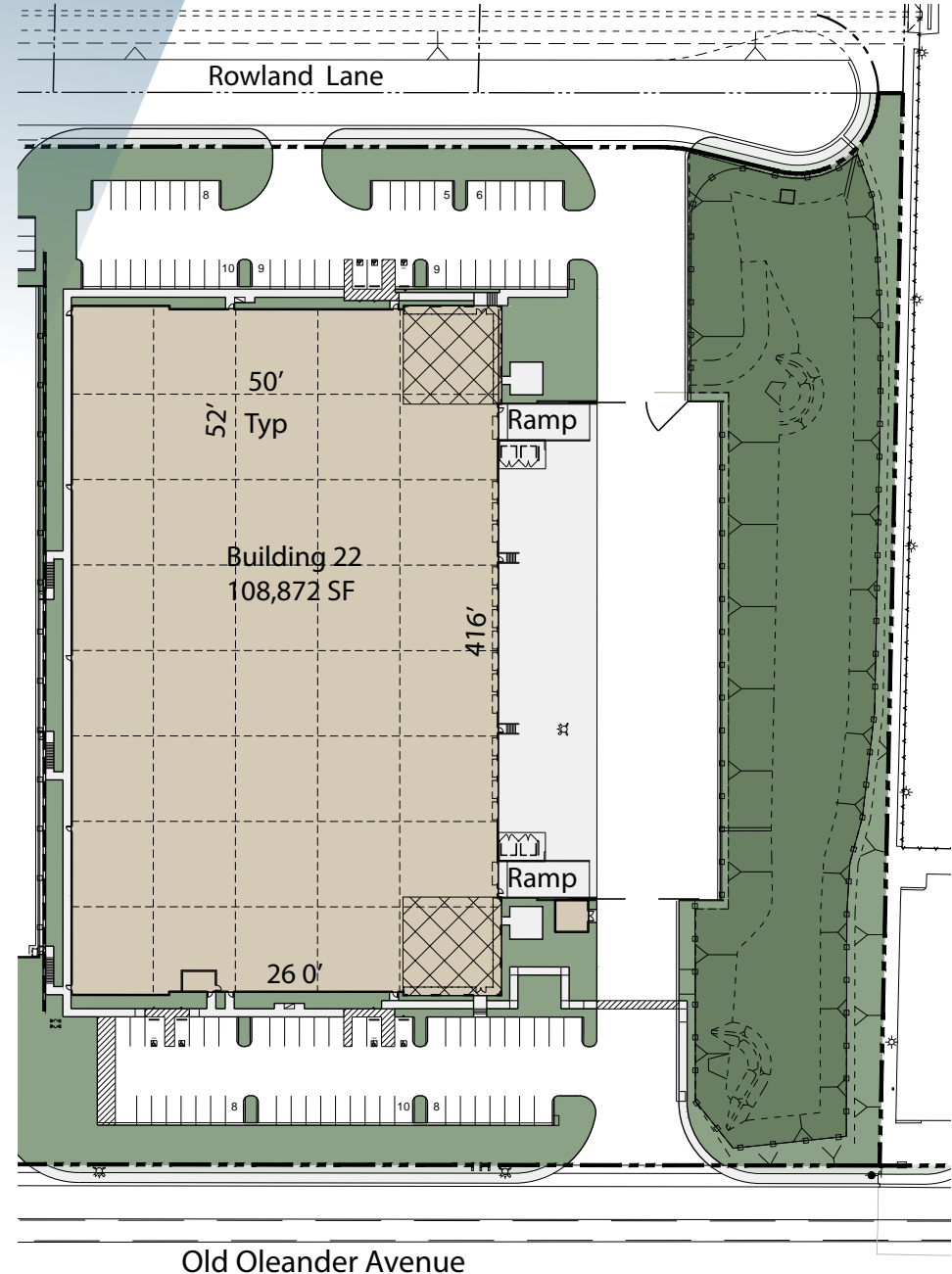
32'  
Clear  
Height

14  
Dock High  
Doors

99  
Auto  
Parking  
Stalls

### BUILDING 22 SPECS

Total Size	108,872 SF
Loading	Single Loading
Column Spacing	52' x 50' Typical Bay
Speed Bay:	60'
Ramps	2 Grade Level Ramps
Building Depth	260'
Sprinklers	ESFR

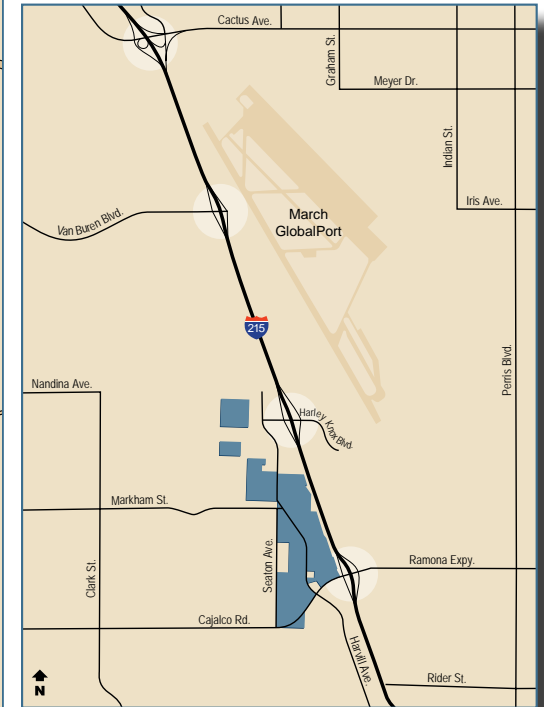




# MAJESTIC FREEWAY BUSINESS CENTER

## RIVERSIDE COUNTY, CA

### LOCATION



The Majestic Freeway Business Center is located between Harley Knox Boulevard and Cajalco Road on the I-215 Freeway in Riverside County, California.

# MAJESTIC FREEWAY BUSINESS CENTER RIVERSIDE COUNTY, CA

CORPORATE  
NEIGHBORS



This statement is based upon information which we believe to be correct and is obtained from sources we regard as reliable but we assume no liability for errors or omissions therein.